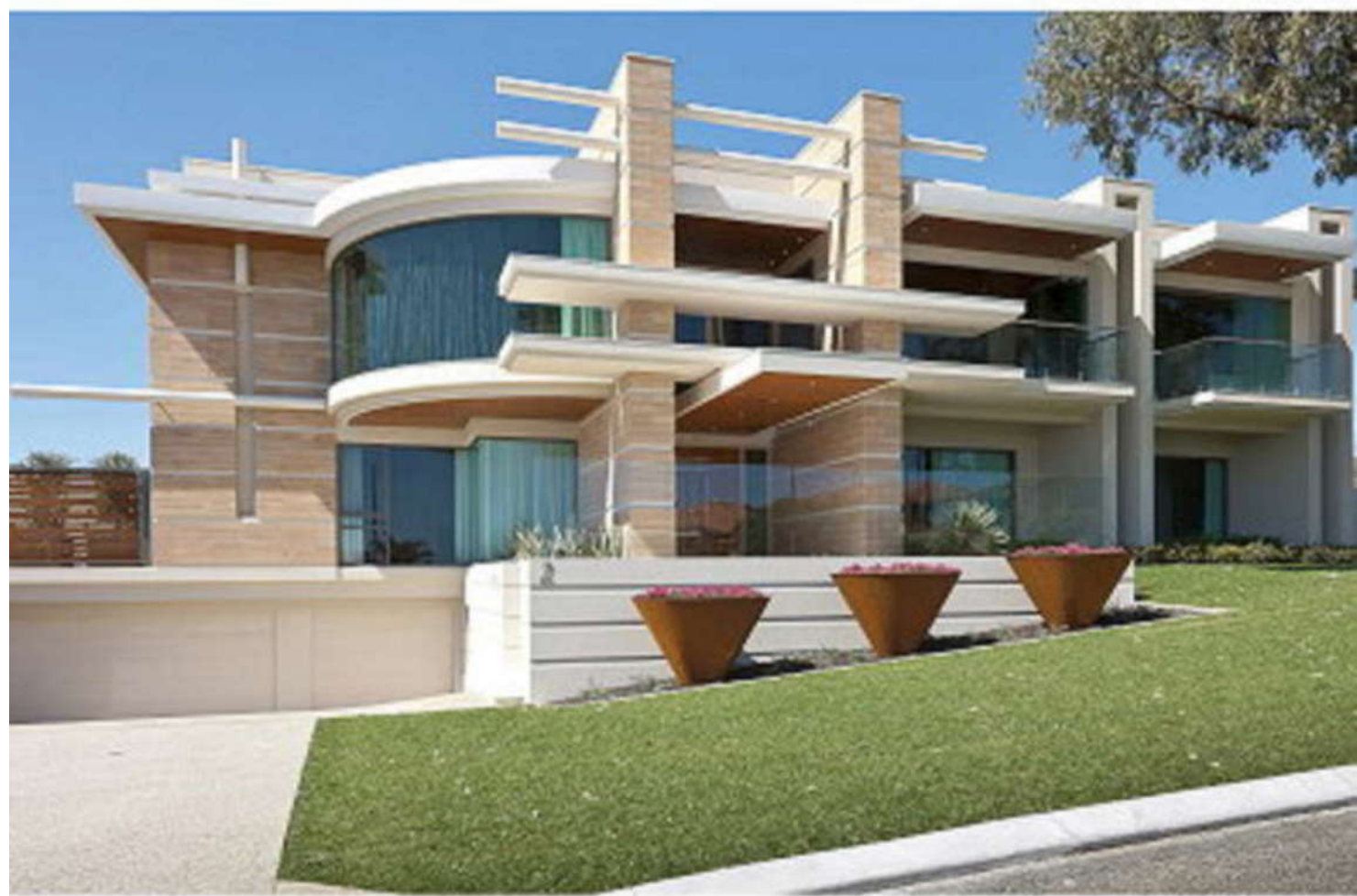


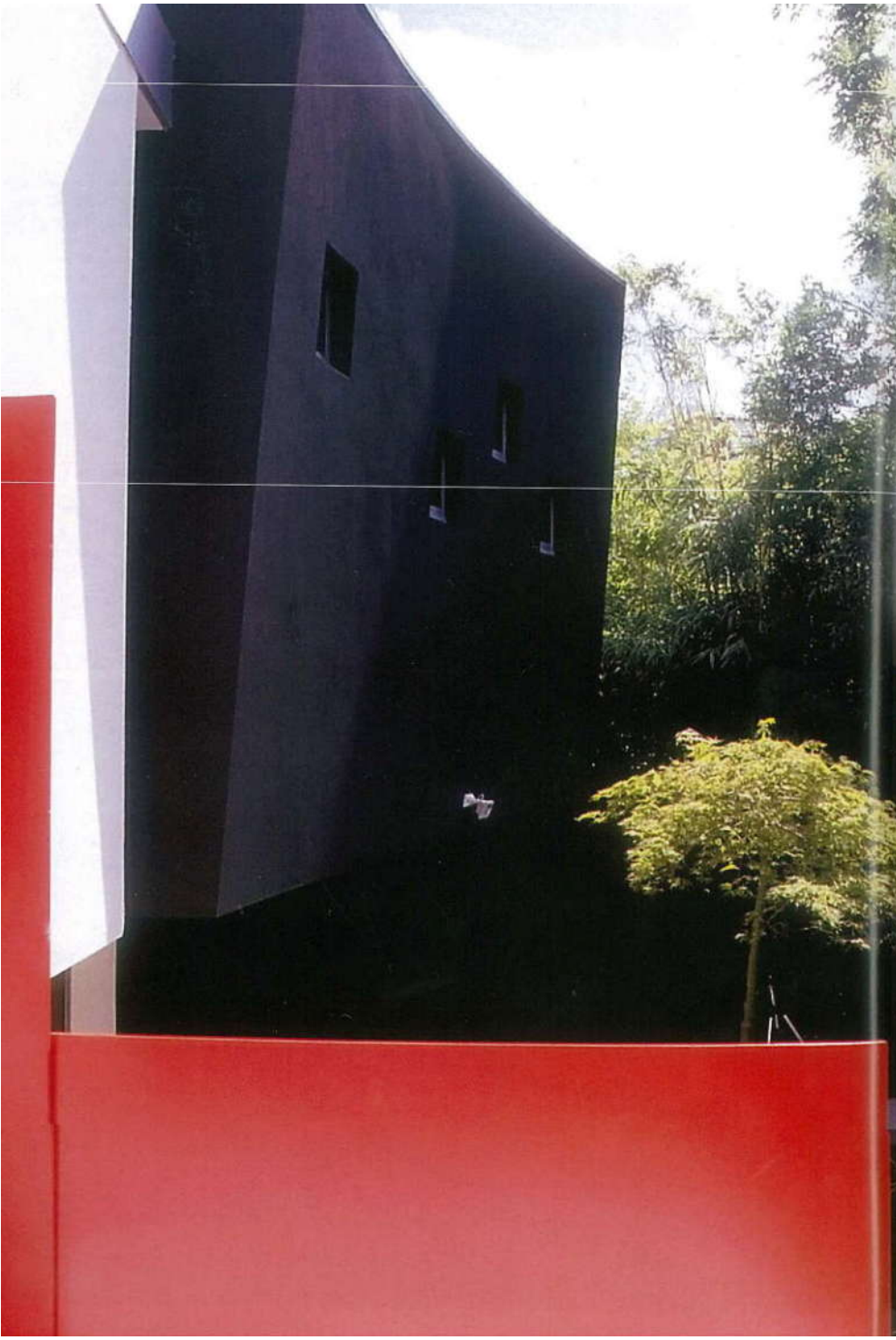
BEST ABODES



THE VERY BEST OF THE BEST HOMES FROM ABODE

abode

EDITED BY GARY TAKLE



Creatively Curved

Nestled in a cul-de-sac of Toorak, the site falls northwest and enjoys striking views of the city skyline and lush vegetation growing along the creek bed adjacent to the northern boundary.





The owners commissioned Robert Blair of RBi Architects to design for them a simple and contemporary home with a functional floor plan, clean lines and large open spaces flowing from one area to another. The result is a modern and minimalist design suited to the contemporary family lifestyle.

Entering from the street front, a sense of calm and simplicity is suggested with feature water gardens, a timber footbridge and textured landscaping. Contrasting this tranquil approach, an air of drama awaits behind the black curved cinematic facade, offset against white walls and striking red partitions leading the visitor through to the porch entry.

Upon entering, a central core painted in a bold cool blue and harbouring the kitchen and powder room becomes the spine for the general living areas of the upper level. Floors are polished timber, and walls and ceilings are painted off-white to accentuate the lightness of the space. Full height floor to ceiling doors throughout the home ensure a free and uninterrupted flow between rooms is achieved.

The kitchen, designed to complement the minimalist concept, includes embossed stainless steel bench tops, polished stainless steel splashback, timber veneer cupboard fronts and matt black 'Imperite' finish to the overhead cupboard doors. A special feature of the kitchen is a raised ceiling with clerestory windows on two sides providing additional natural light and a sense of space. The powder room features ceramic wall and floor tiles, granite vanity bench top and 'Imperite' finish to cupboard fronts.

Extensive use of double glazed window walls to the upper level living areas captures the landscaped boundary and extends onto the outdoor

entertaining deck soaking in the city views. Double glazing to the north and west provide solar insulation without losing a connection to the environment. Elongated highlight windows to the south allow visual privacy and provide upper level illumination to create an ambient feel to the art gallery-like passageway.

The small cinema-like windows to the master bedroom and ensuite add to the drama of the curved front facade, designed to reflect the identical curve of the cul-de-sac boundary. The master bedroom and dressing room - positioned in the upper level to capture the city skyline views and creek bed landscape - are fully carpeted with walls and ceilings painted off-white. A feature of the ensuite is floor to ceiling wall tiles, double vanity with granite bench top and integral shower with clear frameless glass screen. A skylight provides essential natural lighting from above.

The lower level bedrooms - designed to suit the teenage lifestyle - are serviced by the main bathroom, rumpus room, billiard room for the three quarter size table and outdoor terrace with the exception of one which enjoys its own ensuite facilities and terrace to the feature water garden.

Cut From the Blue Landscape Design ensured that a long-standing oak tree was incorporated into the boundary landscaping and is framed by the formal living and dining rooms.

RBi Architects
1/30 Cubitt Street Richmond VIC
Phone: 03 9421 2134

